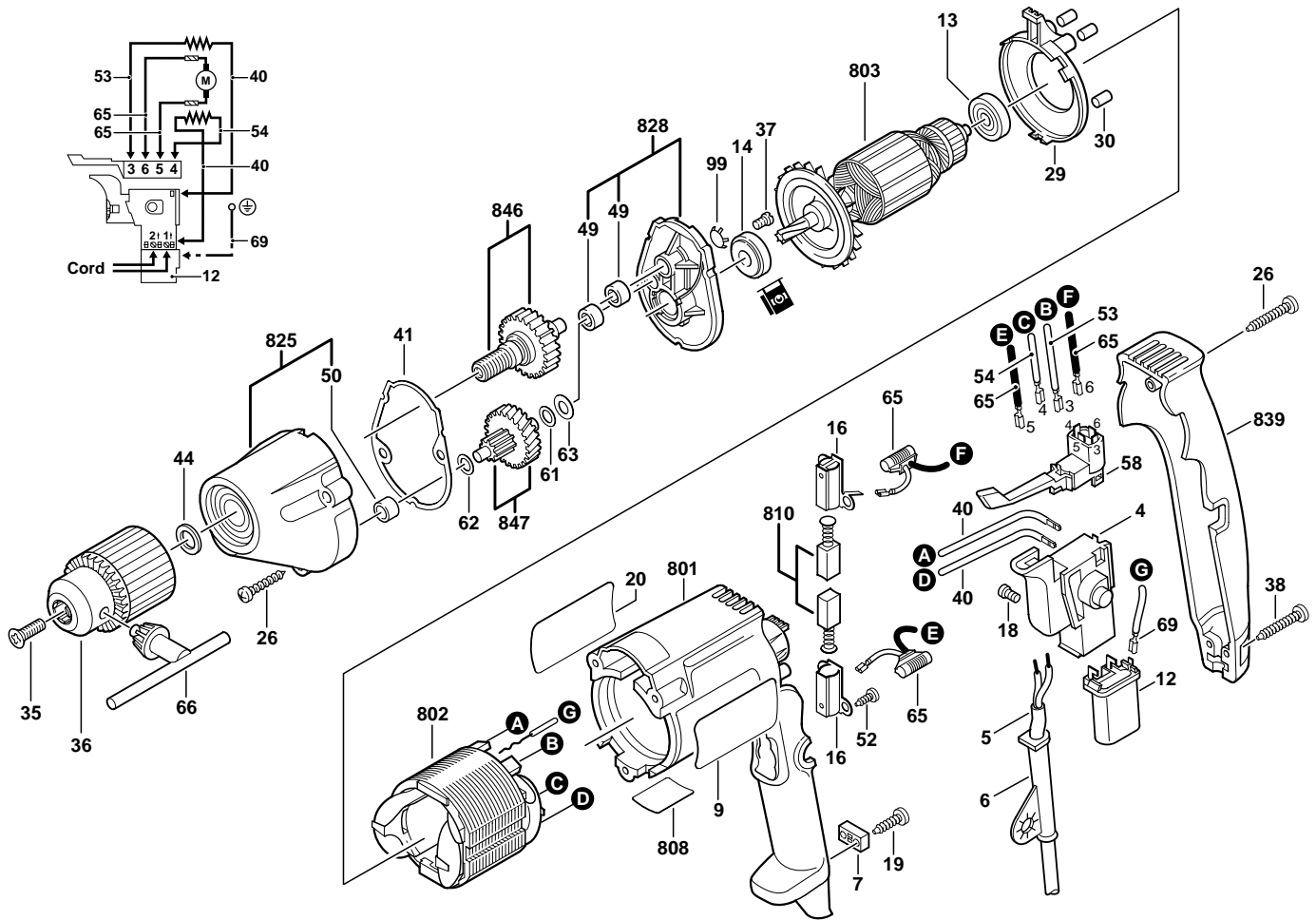


BOSCH

August 1997
220V - 230V

3/8" DRILL
Model 0601000703

1000VSR



Pos.	Part Number	Description {Qty}	F/C	Pos.	Part Number	Description {Qty}	F/C
4	2 607 200 202	Switch VS	17	52	2 910 611 405	Screw {4}	89
5	1 604 460 046	Cord 230V	11	53	2 604 448 074	Cable 98mm	10
6	2 600 707 060	Strain Relief	11	54	2 604 448 100	Cable 68mm	10
7	2 601 035 001	Cord Clamp	89	58	2 607 200 338	Switch REV.	16
9	2 610 906 800	Label "1000VSR"	9	61	2 600 100 607	Shim 0.3mm	65
12	2 607 329 114	Capacitor	14	62	2 600 101 654	Washer	65
13	1 900 905 018	Ball Bearing	60	* 63	2 600 100 628	Shim 0.5mm	65
14	2 600 905 021	Ball Bearing	61	65	2 604 465 074	Choke Coil {2}	10
16	2 604 337 003	Brush Holder {2}	25	66	2 610 308 333	Chuck Key	9
18	2 603 410 001	Screw {2}	89	69	2 604 448 103	Cable 170mm	10
19	2 910 611 019	Screw {2}	89	99	3 600 171 504	Lock Washer	89
20	2 610 906 850	Label "Caution"	9	801	3 605 108 557	Motor Housing	71
26	2 910 615 082	Screw {4}	89	802	2 604 220 392	Field 230V	22
29	3 600 590 505	Baffle	24	803	2 604 010 803	Armature w/Fan 230V	AW
30	3 602 391 503	Rubber Buffer {3}	24	808	3 601 119 718	Nameplate	9
35	3 603 430 505	Rev. Screw	85	810	2 604 321 914	Brush Set	26
36	2 610 358 035	3/8" Keyed Chuck	91	825	3 605 190 513	Gear Housing Assembly	72
37	2 914 411 045	Screw {2}	89			w/pos. 50	
38	2 910 615 022	Screw {2}	89	828	3 605 806 537	Intermediate Plate Assy.	38
40	2 604 448 005	Cable 130mm {2}	10			w/pos. 49	
41	3 601 016 502	Gasket	79	839	3 605 133 521	Handle Cover	74
44	3 600 102 505	Washer	65	846	3 606 120 553	Spindle 3/8"-24 w/Gear	32
49	3 600 910 505	Needle Bearing {2}	56	847	3 606 319 520	Gear w/Pinion	31
50	3 600 910 506	Needle Bearing	56				

+ = Not Illustrated * = As Required F/C = Failure Code AW = Refer to AW Labor Time Chart