

BOSCH

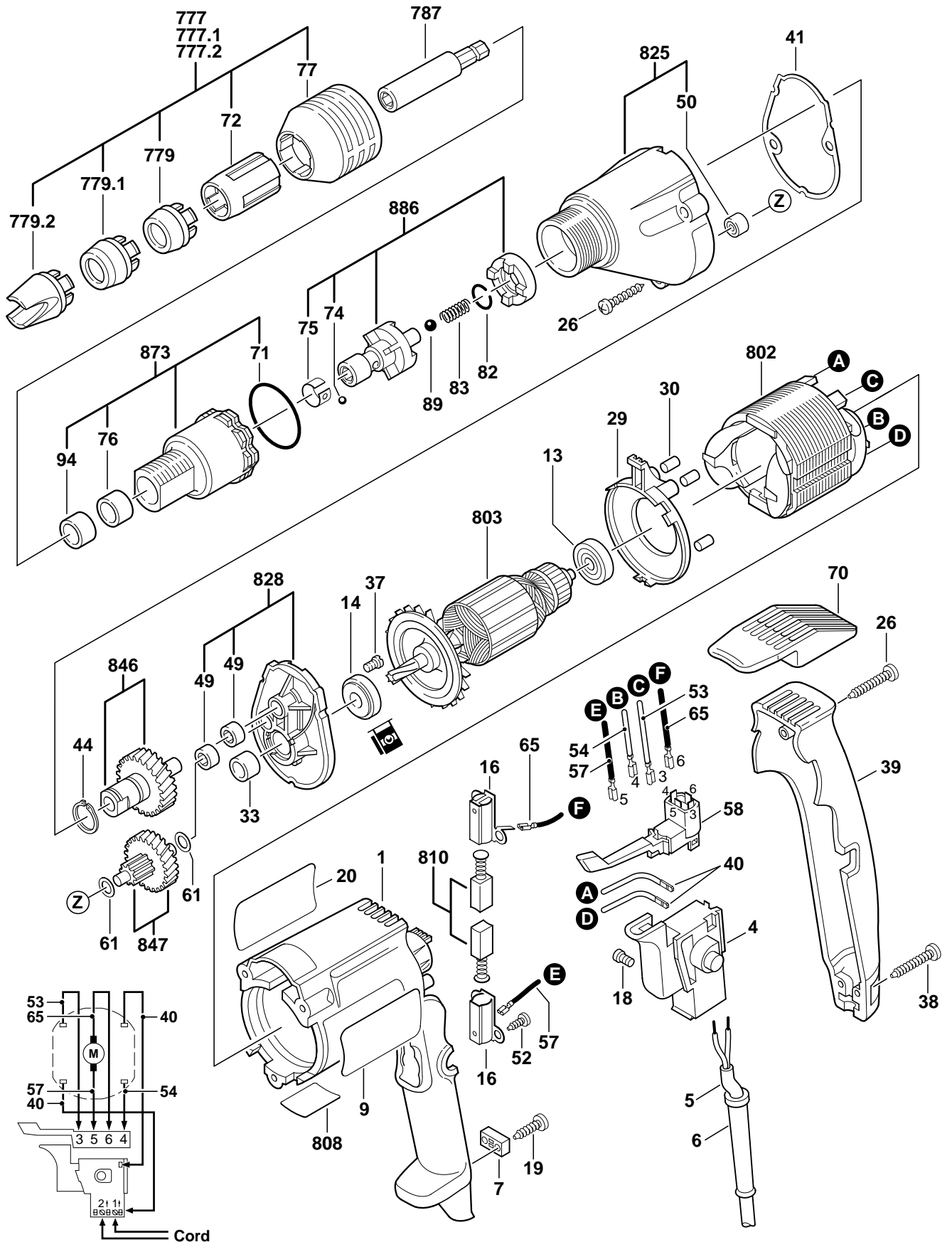
August 1997
INDUSTRIAL

FASTENER DRIVER

Model 0601423534

1423VSR

(.534)



1423VSR (.534) FASTENER DRIVER

Pos.	Part Number	Description {Qty}	F/C	Pos.	Part Number	Description {Qty}	F/C
1	2 605 104 332	Motor Housing	71	72	3 600 360 505	Adjusting Sleeve	91
4	2 607 200 203	Switch VS	17	74	1 903 230 006	Ball 3.5mm	66
5	3 604 460 555	Cord 120V 18/2	11	75	3 600 034 504	Spring Clip	9
6	2 600 703 013	Strain Relief	11	76	3 600 900 527	Bushing	82
7	2 601 035 001	Cord Clamp	89	77	3 600 390 502	Locking Ring	91
9	2 610 906 968	Label "1423VSR"	9	82	3 600 200 516	Spring Retainer	89
13	1 900 905 018	Ball Bearing	60	83	3 604 613 507	Spring	27
14	2 600 905 021	Ball Bearing	61	89	1 903 230 011	Ball 6mm	66
16	2 604 337 003	Brush Holder {2}	25	94	3 600 900 529	Bushing	82
18	2 603 410 001	Screw {2}	89	777	3 600 552 510	Depth Guage Assembly	91
19	2 910 611 019	Screw {2}	89			w/pos. 72, 77, 779	
20	2 610 906 869	Label "Caution"	9	777.1	3 600 552 512	Depth Guage Assembly	91
26	2 910 615 082	Screw {4}	89			w/pos. 72, 77, 779.1	
29	2 601 328 046	Baffle	24	777.2	3 600 552 513	Depth Guage Assembly	91
30	3 602 391 503	Rubber Buffer {3}	24			w/pos. 72, 77, 779.2	
33	2 600 400 008	Sleeve	82	779	3 600 552 507	Depth Guage - Plastic	91
37	2 914 411 045	Screw {2}	89	779.1	3 600 552 506	Depth Guage - Metal	91
38	2 910 615 022	Screw {2}	89	779.2	3 600 552 511	Depth Guage - Corrugated	91
39	2 605 132 050	Handle Cover	74	787	3 608 550 504	Nut Setter 5/16"	9
40	2 604 448 005	Cable 130mm	10	802	2 604 220 482	Field 120V	22
41	3 601 016 502	Gasket	79	803	2 604 010 793	Armature w/Fan 120V	AW
44	2 916 650 003	Retaining Ring	89	808	3 601 119 718	Nameplate	9
49	3 600 910 505	Needle Bearing {2}	56	810	2 604 321 914	Brush Set	26
50	2 600 914 017	Needle Bearing	56	825	3 605 190 526	Gear Housing Assembly	72
52	2 910 611 405	Screw {4}	89			w/pos. 50	
53	2 604 448 074	Cable 98mm	10	828	3 605 806 537	Intermediate Plate Assy.	38
54	2 604 448 100	Cable 68mm	10			w/pos. 49	
57	2 604 448 104	Cable 60mm	10	846	3 606 120 567	Drive Shaft w/Gear	32
58	2 607 200 338	Switch REV.	16	847	3 606 319 525	Gear w/Pinion	31
61	2 600 100 607	Shim 0.3mm {2}	65	873	3 605 190 521	Clutch Housing Assembly	82
65	2 604 448 102	Cable 103mm	10			w/pos. 71, 76, 94	
70	3 600 690 505	Belt Clip	9	886	3 606 441 502	Clutch Kit	46
71	3 600 210 506	O-Ring	78			w/pos. 74, 75	

Service Notes:

To: All Authorized and Factory Service Centers,
Field Sales and Internal Support Personnel

Re: Switch Change for models

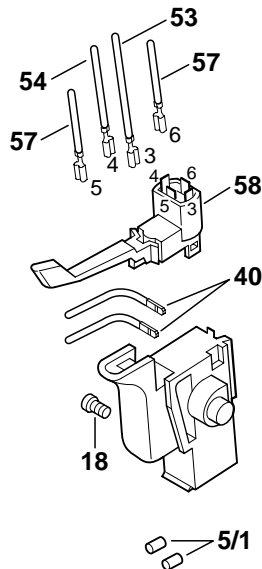
1000VSR	1021VSR	1028VSR	1420VSR	B6100
1001VSR	1022VSR	1029VSR	1420VSRSL	B6270
1002VSR	1023VSR	1404VSR	1421VSR	B6280
1003VSR	1026VSR	1404VSRSL	1422VSR	B6950
1020VSR	1027VSR	1405VSR	1422VSRQ	B6980

Please insert this bulletin into the "Technical Bulletins" section of your Bosch Parts Manual, only after making any additions or notes to your Illustrated Parts List(s).

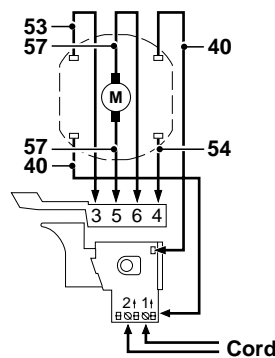
Please be advised that a new switch configuration has been introduced for the above listed models. This change will take place in newer produced versions and effects all service requirements.

Switch Kit 2 610 994 891 contains:	<u>Pos.</u>	<u>Part Number</u>	<u>Description</u>
	5/1	1 900 452 012	Terminal Sleeve {2}
	18	2 603 410 001	Screw {2}
	40	2 604 448 146	Cable 110mm {2}
	53	2 604 448 137	Cable 80mm
	54	2 604 448 100	Cable 68mm
	57	2 604 448 104	Cable 60mm {2}
	58	2 607 200 338	Reverse Switch

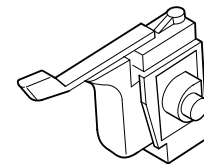
Use 2 610 994 891
Switch Kit



New Wiring Diagram



Old 3 607 200 523
No Longer Available



Note: The terminal sleeves (pos. 5/1) need to be installed on the tips of the power cord to insure a good connection with the switch. Rotation adjustments are accomplished by swapping the brush cables on the reverse switch (locations 5 & 6).

All questions should be directed to your Authorized Service Manager.

Product Service Department