

# T ECHNICAL INFORMATION



Product

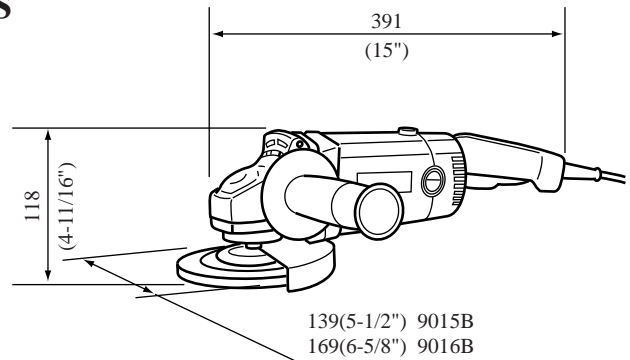
**Models No.** ▶ 9015DB,9016DB

**Description** ▶ 125mm(5") Angle Grinder  
150mm(6") Angle Grinder

## CONCEPTION AND MAIN APPLICATIONS

Model 9015DB(and 9016DB) are sister version of existing Model 9015B/9016B.

Their benefit is AC/DC switch,which makes it possible to use at both AC and DC power source(e.g.welder). Other features and benefits are equal to Model 9015B/9016B.



## ► Specifications

Voltage (V)	Current (A)	Cycle (Hz)	Continuous Rating (W)		Max. Output(W)
			Input	Output	
120	12.5	50/60	1370	800	1600

No load speed(R.P.M.)		<b>9015DB</b>	10000rpm (UK:11,500rpm)
		<b>9016DB</b>	10000rpm (UK:11,500rpm)
Size of depressed center wheel	Outer diameter	<b>9015DB</b>	125mm(5")
		<b>9016DB</b>	150mm(6")
	Arbor diameter	22.23mm(7.8")	
	Thickness	6mm(1/4")	
Net weight	Without wheel		2.4Kg(5.3lbs)
	With wheel	<b>9015DB</b>	2.9Kg(6.4lbs)
		<b>9016DB</b>	3.0Kg(6.6lbs)
Cord length			2.5m(8.2ft)

## ► Standard equipment

Lock Nut Wrench 35-----1 pc.

Depressed Center Wheel (36N)-----1 pc.

<Note> The standard equipment may differ from country to country.

## ► Optional accessories

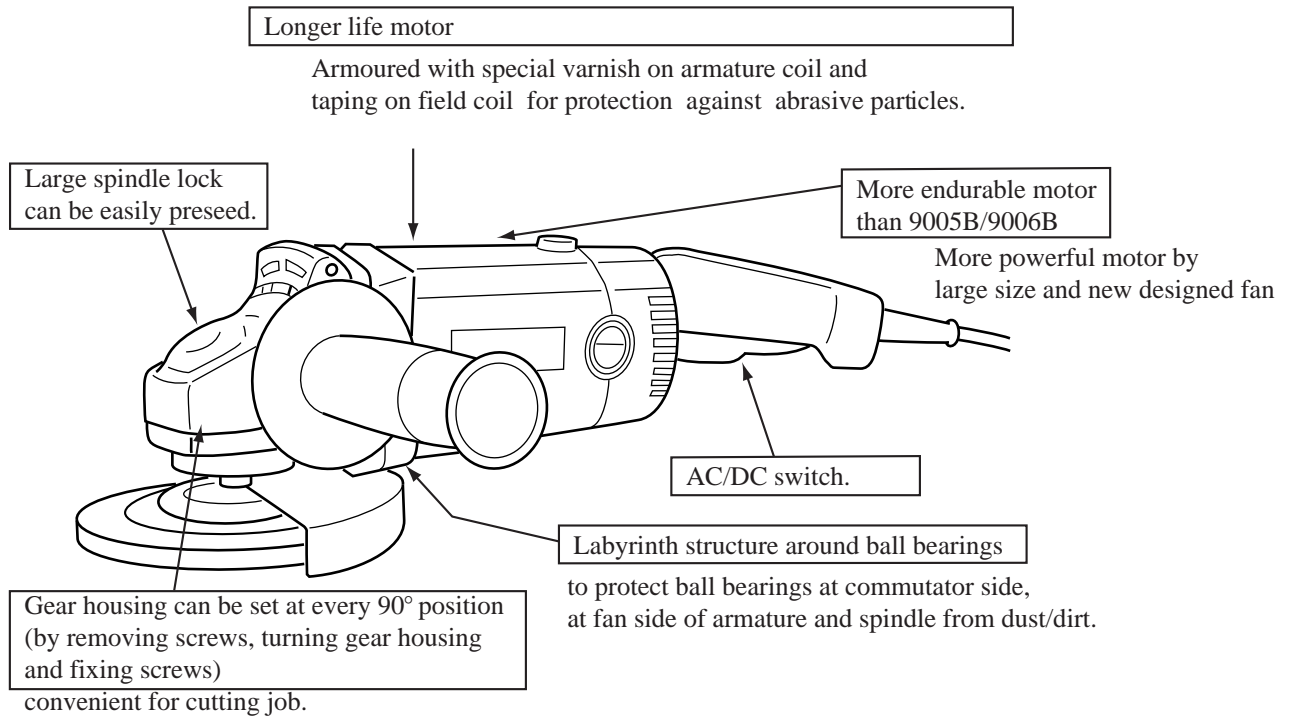
Depressed Center Wheel (24)

Wire Cup Brush 90

Rubber Pad

Lock Nut(for abrasive disc)

Abrasive Disc (24,30,50,80, 100,120)



## ► Comparison

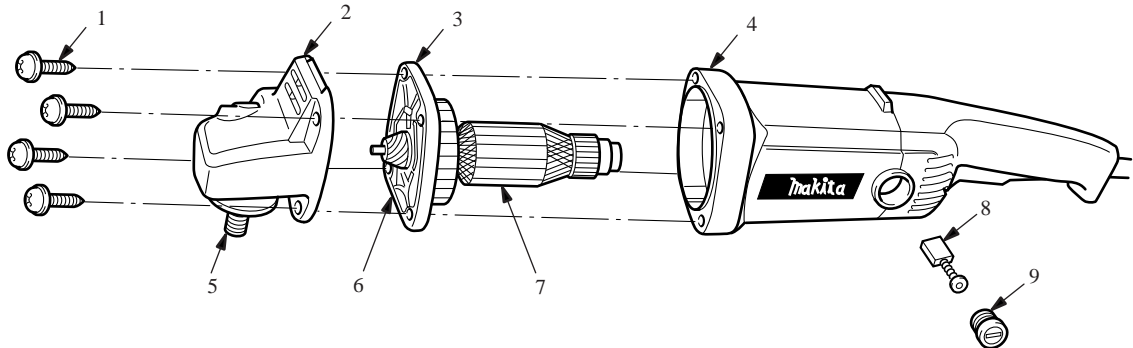
Model No.	Makita		Makita	
	9015DB	9016DB	9005B	9006B
Switch	AC/DC	AC/DC	AC/DC	AC/DC
Diameter of wheel (mm)	125(5")	150(6")	125(5")	150(6")
Rated current(A)(120V)	12.5	12.5	9.0	9.0
No Load Speed (rpm)	10,000	9,000	10,000	10,000
Spindle Lock	O	O	O	O
No load noise (db)	87	87	88	88
Net Weight (Kg)	A	2.4(5.3lbs)	2.4(5.3lbs)	2.4(5.3lbs)
	B	2.9(6.4lbs)	3.0(6.6lbs)	2.8(6.2lbs)

<Note> Net weight A-----without wheel,wheel cover, inner flange, lock nut and power supply cord  
 Net weight B-----without wheel and power supply cord

## ► Repair

### (1) Replacing of armature

- 1) Remove the wheel stone and the wheel cover, respectively.
- 2) Remove the carbon brush.
- 3) Disconnect the tapping screw PT5x30(4 pieces)for mounting the gear housing and motor housing and then remove the armature.

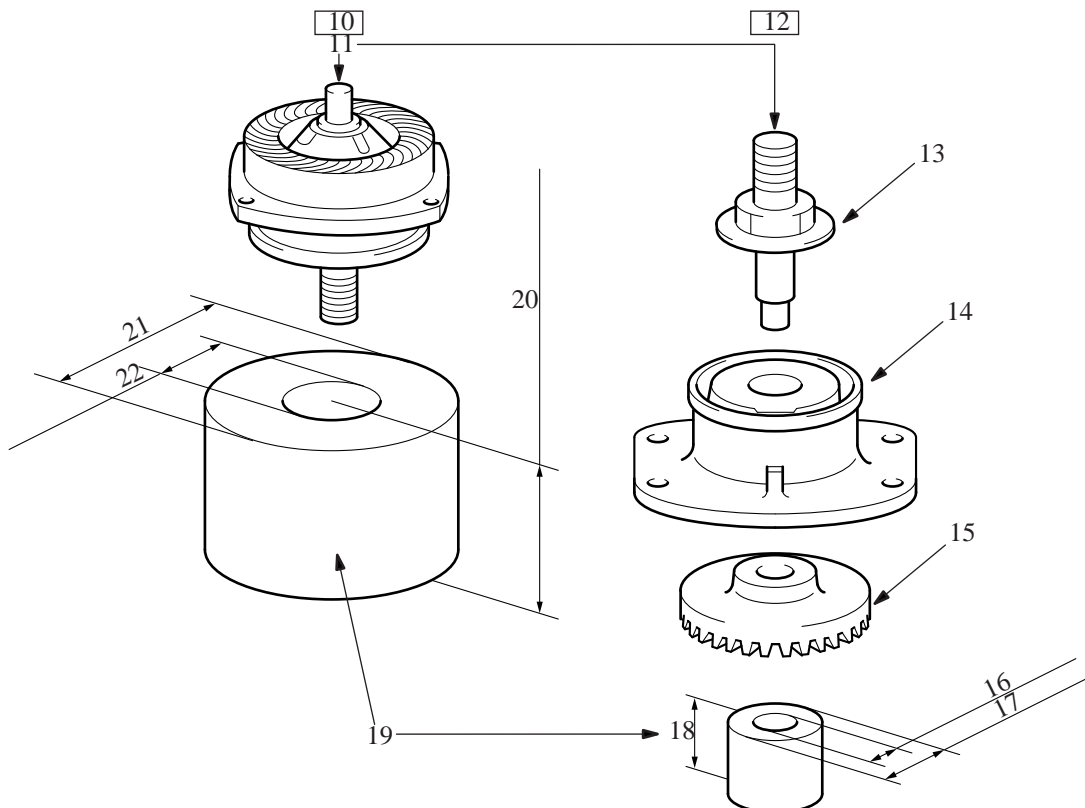


- 1) Remove the wheel stone and the wheel cover, respectively.
- 2) Remove the tapping screw CT5 x16(4 pieces) for mounting the bearing box.
- 3) The spiral bevel gear 33 is inserted in the spindle. Disassemble it in a way shown below.

\*To assemble the gear housing and gear housing cover on the motor housing, set in a way that un-processed edge face on the gear housing cover faces screw side of the spindle.

### (2) Replacing of the spiral bevel gear 33

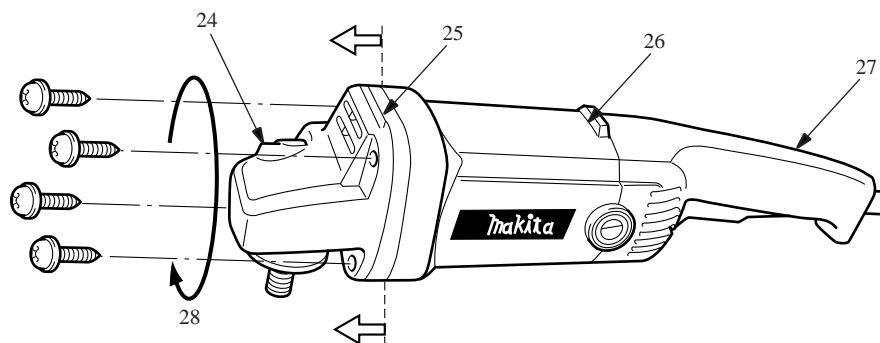
- 1) Remove the wheel stone and the wheel cover, respectively.
- 2) Remove the tapping screw CT5x16(4 pieces) for mounting the bearing box.
- 3) The spiral bevel gear 33 is inserted in the spindle. Disassemble it in a way shown below.



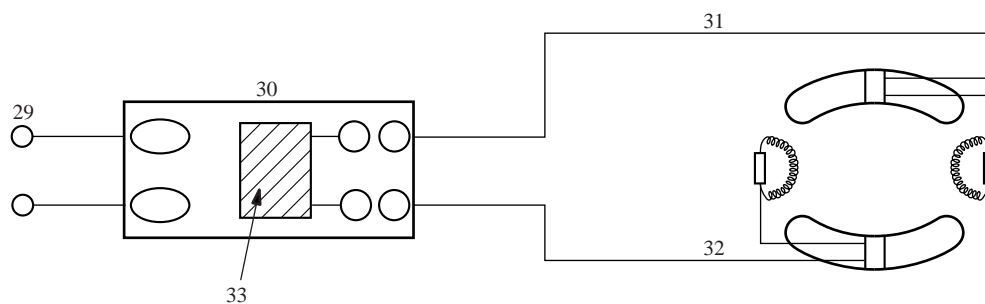
Turning the gear housing and gear housing cover in 4 directions together every 90 ° enables to change angle between wheel stone and handle.

(Note) They can turn while the gear housing cover is housed in the motor housing.

23



### ► Circuit diagram



(3) Reference information : angle change between wheel stone and handle