

# T ECHNICAL INFORMATION



New Tool

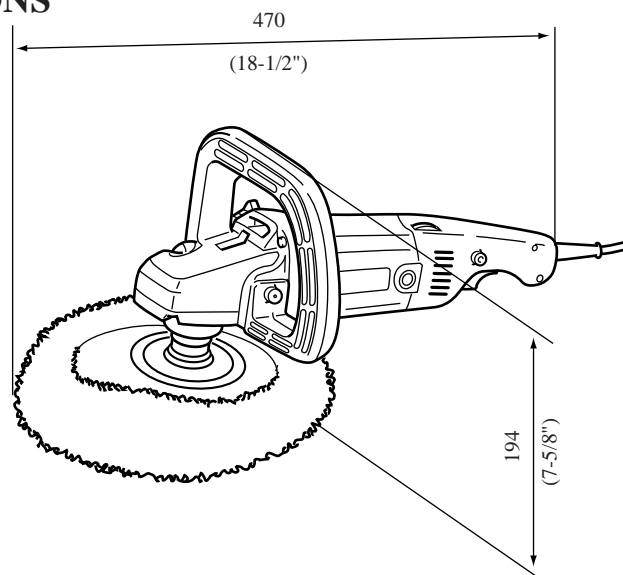
**Models No.** ▶ 9227CB

**Description** ▶ 180mm Sander Polisher

## CONCEPTION AND MAIN APPLICATIONS

Model 9227CB is the improved version of the existing Model 9217SPC and its brief benefits are;

- \*Easy for polishing
  - Variable speed control by trigger : 0-3000rpm
  - Variable speed control by dial : 600-3000rpm(wide area)
- \*Loop handle can be gripped easily at various operating position.
- \*Face of pad is velcro type to make replacing buff (wool pad, etc.) easy.
- \*Sanding operation can be performed using rubber pad and abrasive disc (optional accessories).
- \*Electronic speed control feature
  - Less reaction at starting by soft start feature
  - Clean surface by steady speed feature



### ► Specifications

Voltage (V)	Current (A)	Cycle (Hz)	Continuous Rating(W)		Max. Output(W)	
			Input	Output		
110	10.0	50/60	1100	580	1600	For U.K.
220	5.7	50/60	1200	710	1800	
230	5.5	50/60	1200	710	1800	
240	5.3	50/60	1200	710	1800	
240	4.8	50/60	1100	580	1800	for U.K.

No Load Speed	0-3000rpm
Diameter of wool pad	180mm (7")
Net Weight	3.0kg (6.6 lbs)
Cord Length	2.5m (8.2 ft)

### ► Standard equipment

- Hex. Wrench 6-----1 pc.
- Wool Pad 180-----1 pc.
- Sleeve 18-----1 pc.
- <Note> The standard equipment may differ from country to country.

### ► Optional accessories

- Abrasive Disc 180-16,20,24,30,50,80,100,120
- Rubber Pad
- Sanding Lock Nut 16-48
- Lock Nut Wrench 28
- Grip 36 Complete
- Wool Pad 180 Set
- Wool Bonnet 180

### ► Features and benefits

- 1.Double insulated
- 2.See the sheets attached for more information.

The standard equipment for the tools shown may differ from country to country.

Variable speed control by dial  
600~3000rpm(wide area)

600rpm is fit to wax urethane bumper.

Loop handle

Easy to grip at various operating position  
\*Grip 36 Complete (optional accessory) can be attached.

Dial can be actuated during operation

Cord guard is angled upward

Power supply cord is easy to be hung on the shoulder and is not trailed on the work.

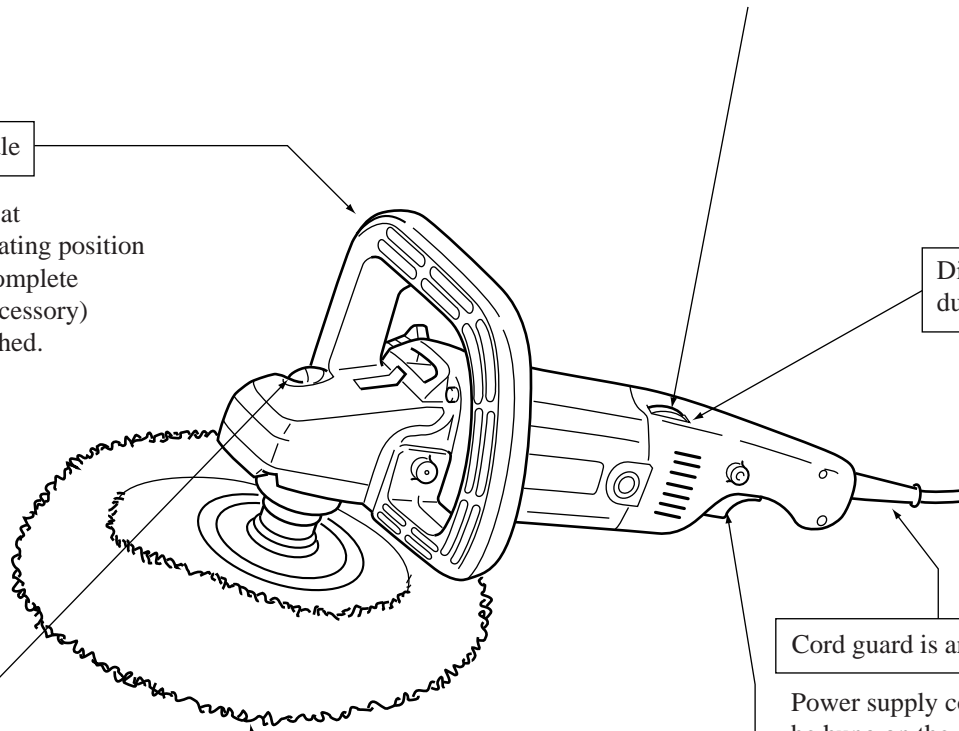
Button for locking spindle

Variable speed control by trigger

Face of pad is velcro type

- Easy to replace buff (wool pad, etc.)
- Pad can be replaced without tool because pad and lock nut are molded in one piece.
- Rubber pad (optional accessory) can be attached with lock nut (optional accessory)

- Speed can be controlled up to the speed set by dial.
- Convenient for operation requiring very low speed.



## ► Comparison

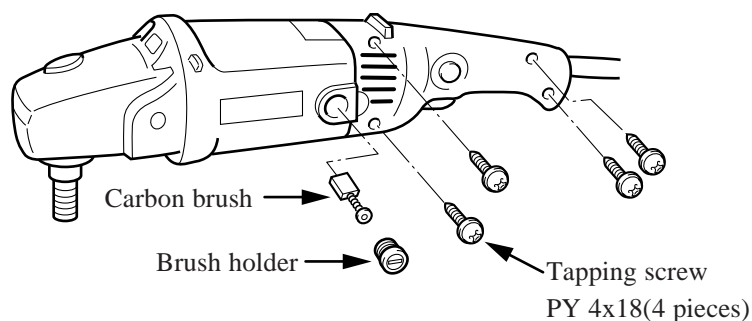
Model No.		Makita		BOSCH GP012E
		9227CB	92217SPC	
Diameter of pad (mm)		180	180	180
Input(w)		1200 (for U.K.:1100)	810	1200
Mains Switch (trigger switch)		Variable speed control		On-off only
No load speed(rpm)	Control by trigger	0-3000	2800	3000
	Control by dial	600-3000	1500-2800	750-3000
Steady speed feature		Yes		
Front handle		Loop handle	Side handle	
Locking spindle		Button	Wrench	Button
Insulation		Double		
Net weight (kg)	A	3.0	3.1	3.6
	B	3.2	3.5	

<Note> Net weight A-----without loop handle ,pad, power supply cord and wool pad  
 B----- without wool pad

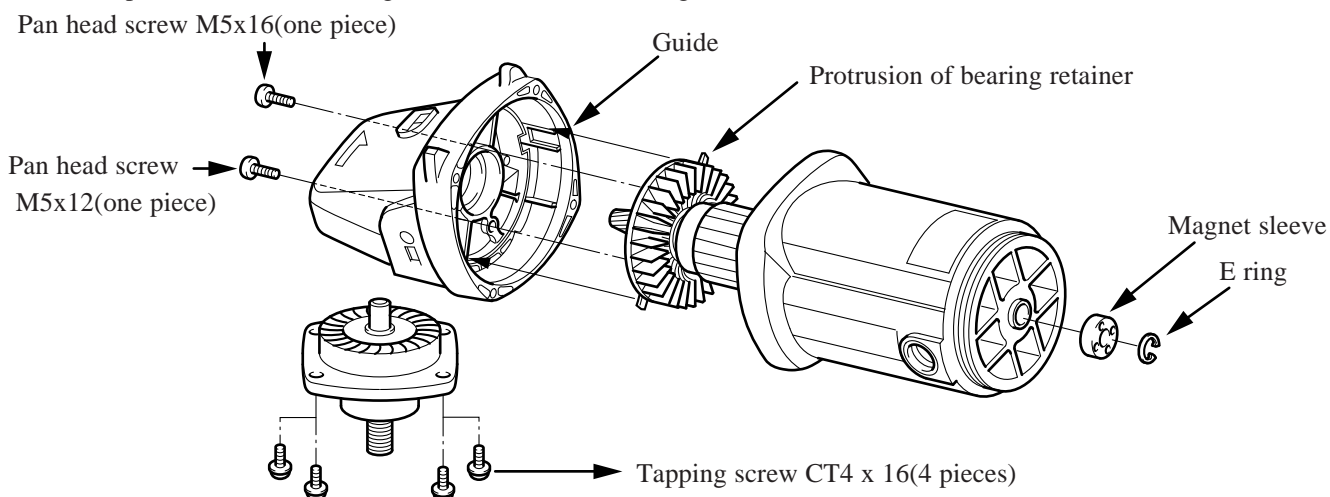
## ► Repair

### (1) Replacing of armature

- 1) Remove the magic pad.
- 2) Remove the carbon brush.
- 3) Remove the tapping screw PT4x18 for holding the handle.

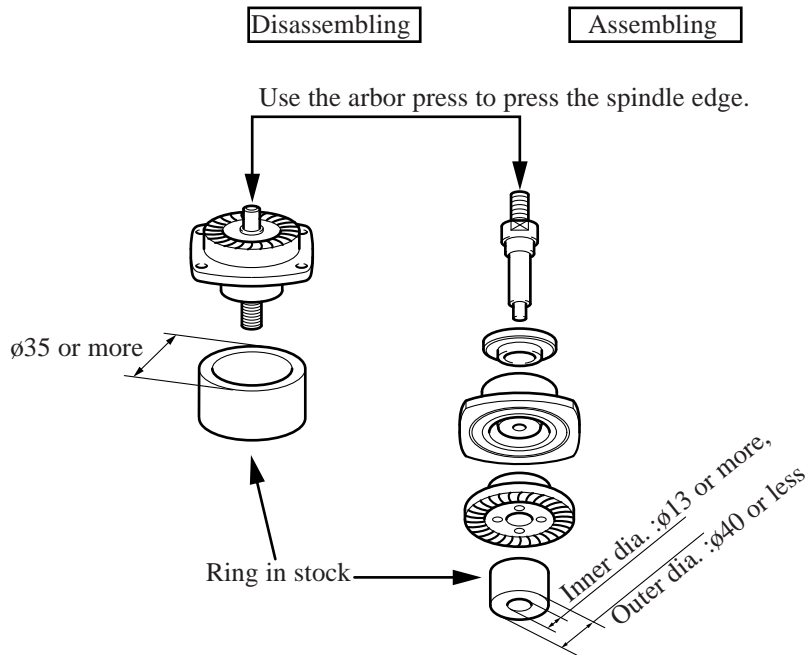


- 4) Disconnect the E ring from the armature shaft and then remove the magnet sleeve.
- 5) Disconnect one body of gear housing and armature from the motor housing.
- 6) Remove the tapping screw CT 4x16 for holding the bearing box.
- 7) Remove the pan head screws M5 x 12 and M5 x 16 for holding the bearing retainer and then pull out the armature.
- 8) To assemble the armature on the gear housing, make fit the guide of bearing retainer of gear housing on the protrusion of the bearing retainer before assembling.



(2) Replacing methods of spiral bevel gear 52

- 1) Disconnect the magic pad.
- 2) Disconnect the tapping screw CT 4 x 16 for holding the bearing box.
- 3) The spiral bevel gear 52 is inserted into the spindle through pressing.  
Disassemble it as shown on the below figure.



► **Circuit drawing**

The chalk coil and condenser are not used in some countries.

