

# T ECHNICAL INFORMATION



New Tool

**Models No.** ▶ 9526PB

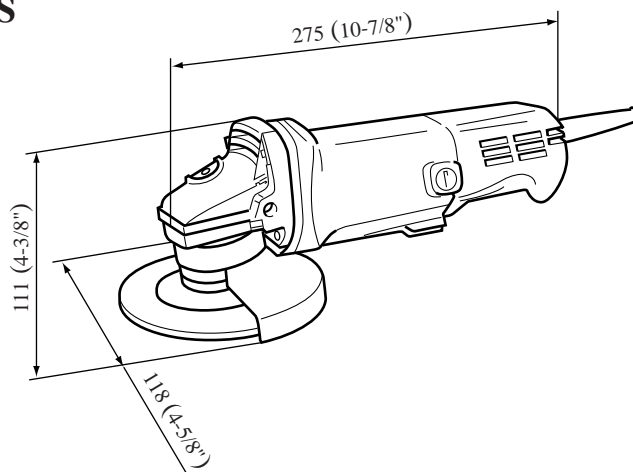
**Description** ▶ 100mm Angle Grinder

## CONCEPTION AND MAIN APPLICATIONS

Model 9526PB is the angle grinder designed for professional users and its brief benefits are;

- \*Slimmer body loaded with more durable new motor (type S55)
- \*Labyrinth. structure seals out dust from ball bearings
- \*Comfortable paddle switch

This model is manufactured in MME.



### ► Specifications

Voltage (V)	Current (A)	Cycle (Hz)	Continuous Rating (W)		Max. Output(W)
			Input	Output	
100	7.9	50/60	750	420	850
115	6.9	50/60	750	420	850
200	4.0	50/60	750	420	850
220	3.6	50/60	750	420	850
230	3.4	50/60	750	420	850
240	3.3	50/60	750	420	850

<b>Max. capacity : Depressed center wheel</b>	100(4")x16(1/4")x6(1/4")
<b>No Load Speed</b>	11000R/min.
<b>Net Weight</b>	1.5kg (3.3 lbs)

### ► Standard equipment

Lock Nut Wrench 20

### ► Optional accessories

Depressed Center Wheels 100-24,36 Rubber Pad 76 Lock Nut 10-30

Abrasive Discs 100-24, 30, 50, 80, 100, 120

Wire Cup Brush 75

Wire Bevel Brush 85

Grip 36 Complete

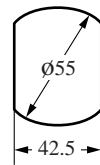
### ► Features and benefits

- 1.Double insulated
- 2.See the attached sheets for more information.

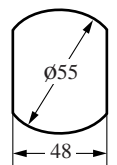
The standard equipment for the tools shown may differ from country to country

Slim/trim body 56mm wide  
for easy, comfortable gripping thanks to the slim but  
endurable S55-type motor

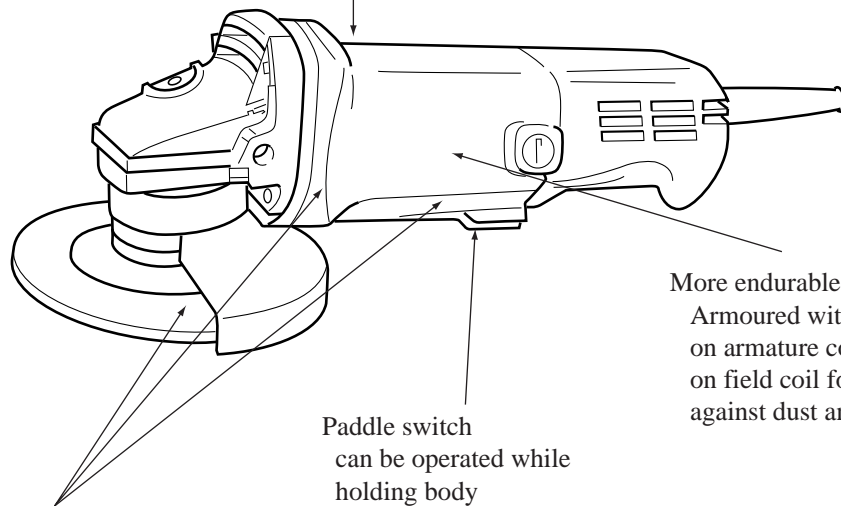
Diameter of field core



S55-type



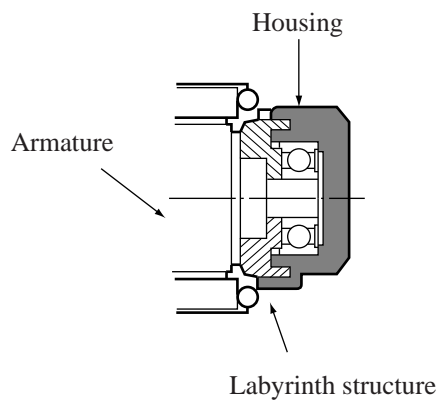
N55-type  
for  
(N9503B  
9540)



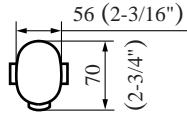
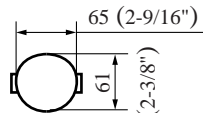
Labyrinth structure  
to protect ball bearings from dust

Paddle switch  
can be operated while  
holding body

More durable motor:  
Armoured with special varnish  
on armature coil and taping  
on field coil for protection  
against dust and wire snap



## ► Comparison

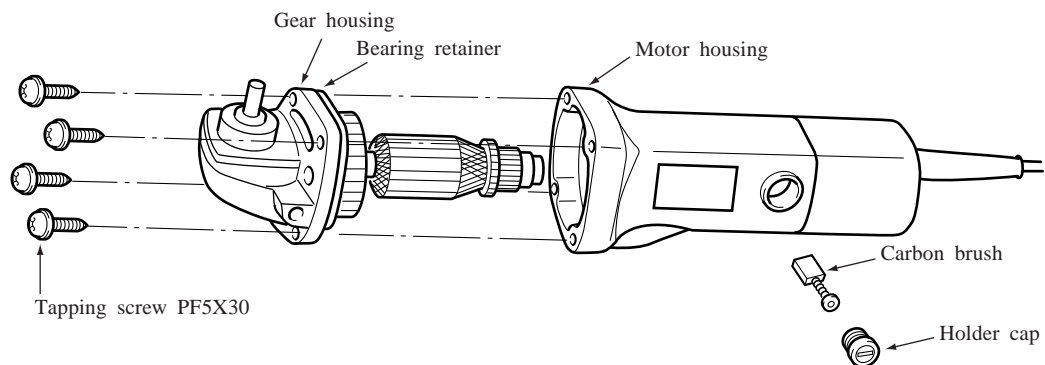
Model No.		Makita 9526PB	Makita N9503B
Wheel diameter		100mm(4")	100mm(4")
Input (w)		750	590
No load speed (rpm)		11000	10000
Net Weight	A (kg)	1.5 (3.3 lbs)	1.6 (3.5 lbs)
	B (kg)	1.7 (3.7 lbs)	1.9 (4.2 lbs)
Insulation class		Double	Double
Shaft-lock		Yes	Yes
Style of switch		Paddle	Slide
Dimension of body (mm)			

Net Weight	A	without wheel, wheel cover, inner flange, lock nut and power supply cord
	B	without wheel and power supply cord

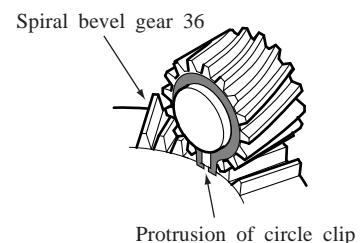
## ► Repair

### (1) Replacing of armature

- 1) Disconnect the wheel and wheel cover, respectively.
- 2) Disconnect the carbon brush.
- 3) Disconnect the tapping screw PF5x30 for holding the gear housing and motor housing and then remove the armature.



- 4) To disassemble the armature from the gear housing, depending on the position its sometime hard to pull out the armature due to touching between the protrusion of circle clip and spiral bevel gear 36. In such a case slightly turn the armature to slide it before disassembling.



(2) Replacing of the spiral bevel gear 36

- 1) Disconnect the wheel and wheel cover, respectively.
- 2) Disconnect the tapping screw CT4x16 for holding the bearing box.
- 3) Since the spiral bevel gear is just inserted into the spindle, assemble/disassemble as shown on the below figure.

