

**FEATURES**

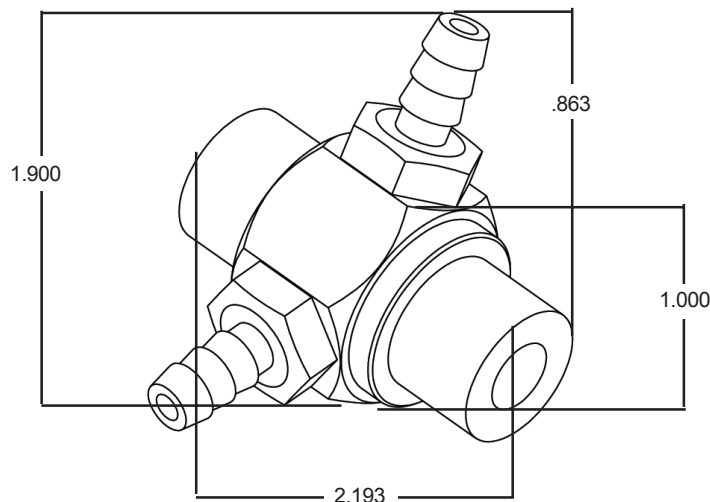
- Designed specifically for carwash applications
- Available fixed barbs
- Made in the USA
- A cost effective solution to your chemical application needs



\*Draw rates can be affected by factors such as pressure, flow rate, length of discharge hose, and chemical viscosity.

**SPECIFICATIONS**

<b>Model</b>	<b>100541</b>
<b>Style</b>	Fixed, Dual Port
<b>Operating Pressure</b>	5500 PSI
<b>Flow Range</b>	3.0 to 5.0 GPM
<b>Maximum Temperature</b>	190° F
<b>Port Sizes</b>	Inlet: 3/8" NPT-M    Outlet: 3/8" NPT-M
<b>Dimensions</b>	2.2 x 1.9 x 1.9
<b>Weight</b>	0.5 lbs.
<b>Materials</b>	Stainless Steel, EPDM, Kynar, Hastalloy

**DIMENSIONS (INCHES)**

# Dual Port Injector

**GENERAL PUMP** A member of the Interpump Group

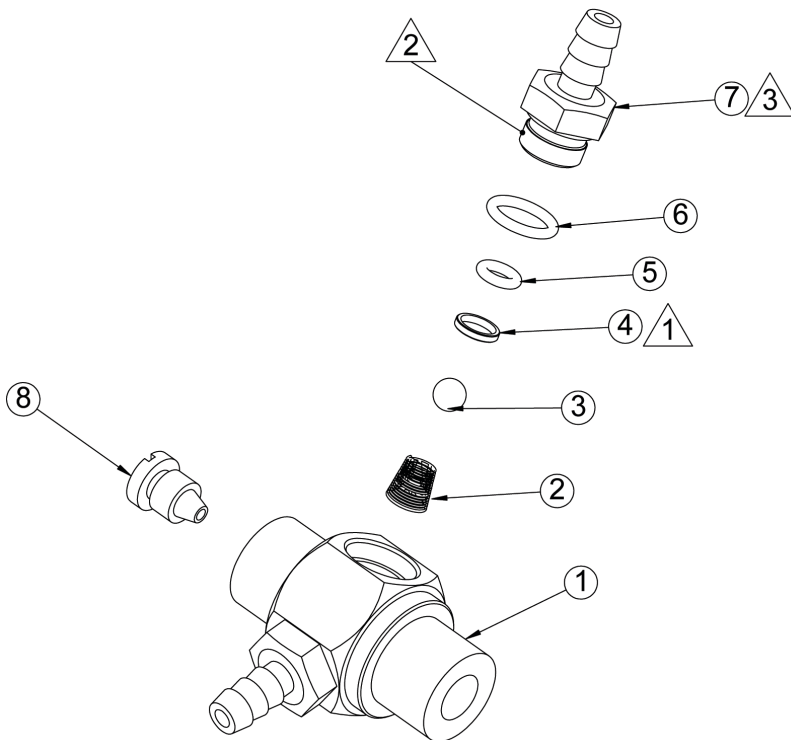
## INSTALLATION

This product is to be used with clean, fresh water. For different or corrosive liquids, contact GP Technical Service Department. With not clean liquids, appropriate filtration should be installed. Select the injector based on the nominal operating rating: system rated pressure, max flow and max temperature. Install valve with direction arrow pointing downstream. For proper operation, a control device such as a dual lance wand, wuick couple nozzles, or an adjustable nozzle holder must be used to lower the system pressure at the nozzle.

Under no circumstances should the pressure of the system exceed the maximum rated pressure of any component.

## INSTALLATION

Problem	Cause	Solution
Chemical injector will not draw chemical	Incorrect nozzle System is not in low pressure mode  Discharge hose is too long  Chemical line is clogged	Check and change nozzle Change or adjust nozzle to put system in low pressure mode Reduce length of discharge hose or change injector* Clear chemical line of obstruction
Rate of draw seems too slow	Discharge hose is too long  Air leak in chemical line Chemical is too viscous	Reduce length of discharge hose or change injector* Locate and repair leak Reduce chemical with water to decrease its viscosity
Chemical injector is leaking from hose barb	Obstruction in hose barb checkvalve  Damaged o-ring in checkvalve	Disassemble and remove obstruction  Remove and replace o-ring
Excessive pressure load on pump, motor or engine	Clogged injector Improperly sized injector orifice	Clear injector orifice of obstruction Change orifice*
*Contact GP Technical Service for assistance		



**2** Apply Loc-tite® to threads for re-assembly

**3** Torque to 40 in/lbs for re-assembly

Item	Part #	Description	QTY
1	520123	Housing, injector, 3/8 NPT, dual port, 304 SS	1
2	720038	Spring, conical, Hastalloy C	2
3	640052	Ball, 7/32, Hastalloy C	2
4	660110	Retaining ring, injector o-ring, Kynar	2
5	701059	O-ring, 50 DURO, EPDM .176 ID x .070 CS	2
6	701012E	O-ring, 70 DURO, EPDM .364 ID x .070 CS	2
7	520122	Hose barb, injector, 304 SS, Threaded	2
8	520066	Nozzle, injector, diameter .083	2
9	800001	Anaerobic thread sealant-blue	1

