

# QR2000N

## Adjustable Pressure Regulator



### SPECIFICATIONS

Part Number:	100892
Operating Pressure Range	750–2000 PSI
Maximum Pressure	2000 PSI
Maximum Flow	5.0 GPM
Maximum Temperature	190°F
Port Sizes: Inlet	3/8" NPT-F
Discharge	1/4" NPT-F
Dimensions	5.6" (nom) x 1.6"
Shipping Weight	2.0 lbs.
Materials	Brass, Stainless Steel, Buna-N, Nickel-Plated Brass

### FEATURES

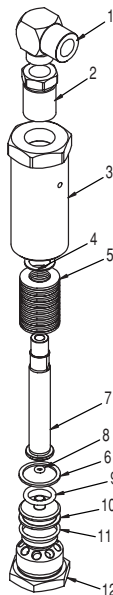
- **Accuracy** Maintains pressure to within 5% of setting – even with multiple guns!
- **Dual Function** Regulates pressure and absorbs pulsation in the system
- **Simplicity** The dual function often eliminates the need for an accumulator
- **High Operating Temperature** to 190°F

### APPLICATIONS

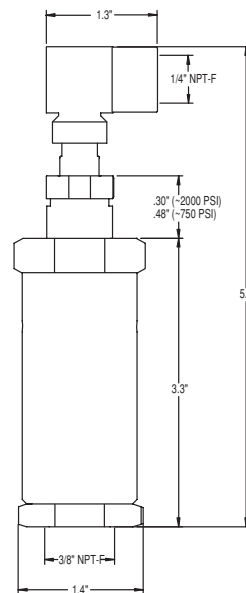
- Full and self-service vehicle wash
- Power washing
- Multiple drop, multiple gun installations
- Hydrostatic testing
- Most applications where discharge volume is fixed

### PARTS LIST

Item	Part No.	Description	Qty
1.	510380	Elbow	1
2.	510381	Brass Fitting	1
3.	510393	Nickel-Plated Brass Body	1
4.	203409	Washer	1
5.	203410	Spring Washer	16
6.	660153	Back-up Ring	1
7.	520184	Shaft	1
8.	700011	O-ring	1
9.	701081	O-ring	1
10.	520185	Poppet	1
11.	701082	O-ring	1
12.	520186	Inlet Fitting	1



### DIMENSIONS



**Note:**  
Proper adjustment requires 10% of total system flow be discharged through the QR2000.

**Example:**  
5 GPM system should bypass .5 GPM.

