

## AVAILABLE REPAIR KITS

Rotary Head Kit - Major:

P/N 2100372 (DCFSCS22Z)

P/N 2100373 (DCFSCS22)

Includes items 2, 3, 4, 5, 6, 7, 8, 9, 10, 11, 12, 13, 14, 15 and 17

Rotary Head Kit - Minor:

P/N 2100203

Includes items 9, 10, 15 and 17

Complete Rotary Head Kit:

P/N 2103227 (DCFSCS22)

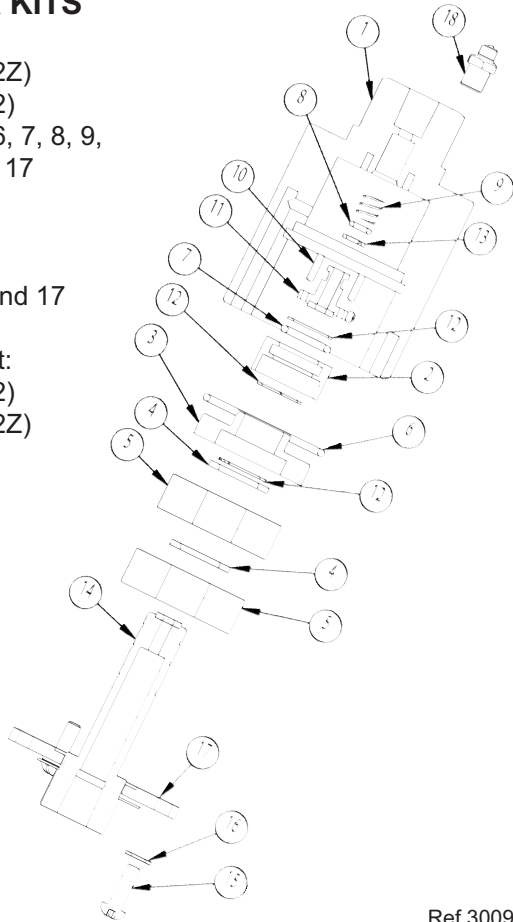
P/N 2103226 (DCFSCS22Z)

Includes all items

Replacement nozzles

for arm 2103224:

925020M (3 required)



Ref 300918 Rev. B  
08-13

ITEM NO.	PART NO.	DESCRIPTION	QTY.
1	2500014	HOUSING (DCFSCS22Z)	1
	2500015	HOUSING (DCFSCS22)	
2	2520030	RETAINER, BEARING	1
3	2520028	RETAINER, BEARING	1
4	2520027	SPACER, BEARING	2
5	2640004	BEARING (DCFSCS22Z)	2
	2640015	BEARING (DCFSCS22)	
6	2701012	O-RING	1
7	2701011	O-RING	1
8	2701010	O-RING	1
9	2720007	SPRING	1
10	2530008	PIN	2
11	2530007	STEM, SMALL	1
12	2520029	SNAP RING	3
13	2710000	BACK UP RING	1
14	2520113	STEM	1
15	2200092	SCREW, M5 X 16	3
16	2200050	WASHER	3
17	2500018	RETAINER, BEARING	1
18	2640012	ZERK, GREASE (DCFSCS22Z)	1

# THE HAMMERHEAD PROFESSIONAL FLAT SURFACE CLEANER

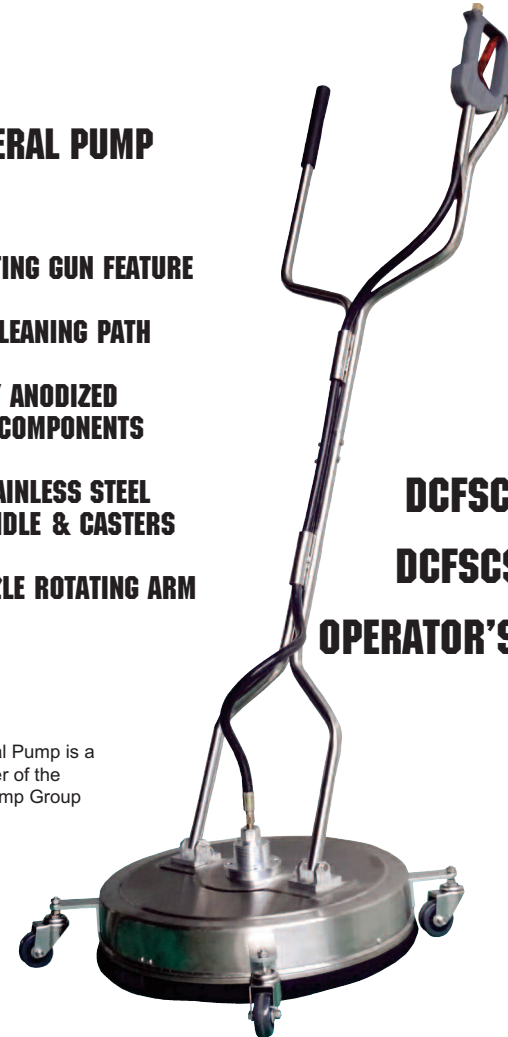
## FROM GENERAL PUMP

- COMPENSATING GUN FEATURE
- FULL 22" CLEANING PATH
- HEAVY-DUTY ANODIZED ALUMINUM COMPONENTS
- RUGGED STAINLESS STEEL COVER, HANDLE & CASTERS
- THREE NOZZLE ROTATING ARM

## DCFSCS22 DCFSCS22Z OPERATOR'S MANUAL



General Pump is a member of the Interpump Group



Ref 300918 Rev.B  
08-13



### **WARNING: Read Before Operating Machine**

**Always wear protective eyewear**  
**Keep clear of rotating nozzles**  
**Never lock trigger gun open with any device**  
**Drain water in cold weather to avoid freezing**  
*Tampering with any part of this machine will void all warranties*



