



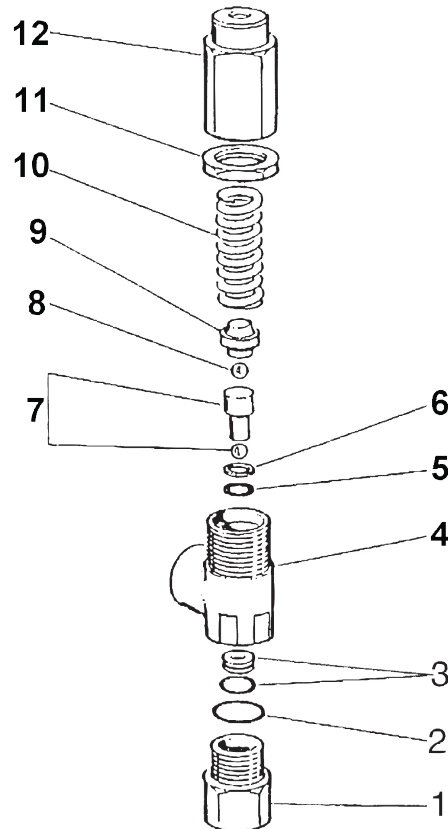
SPECIFICATIONS

Part Number	YBRV624	
Flow Rate	6.3 GPM	
Maximum Pressure	2415 PSI	
Maximum Temperature	195° F	
Port Sizes:	Inlet	3/8-19 BSPP-F
	Bypass	3/8-19 BSPP-F
Weight	12.2 oz.	
Material	Brass, Stainless Steel, Buna-N	

PARTS LIST

YBRV624 Balanced Relief Valve

No.	Part No.	Description	Kit	Qty.
1.	Y60030631	Fitting, bypass, 3/8-19 BSPP-F		1
2.	Y1030660	O-ring, .614 x.070mm	*	1
3.	Y60051120	O-ring, .394x.039 & Seat	*	1
4.	Y60051735	Housing, Brass		1
5.	Y10305500	O-ring, .302 x .070	*	1
6.	Y10402500	Backup ring	*	1
7.	Y60051021	Piston with Ball, SS		1
8.	Y14742100	Ball, Ø1/4", SS		1
9.	Y60050331	Bearing, Thrust, Brass		1
10.	Y60050261	Spring, 4x50.5x18.5mm		1
11.	Y60052331	Nut, Lock, M24		1
12.	Y60053231	Knob, Brass, M24		1
*	Y60053524	Repair Kit YBRV624		



Ref 300450 Rev. C
07-06

