

Check Valves

Brass Check Valves



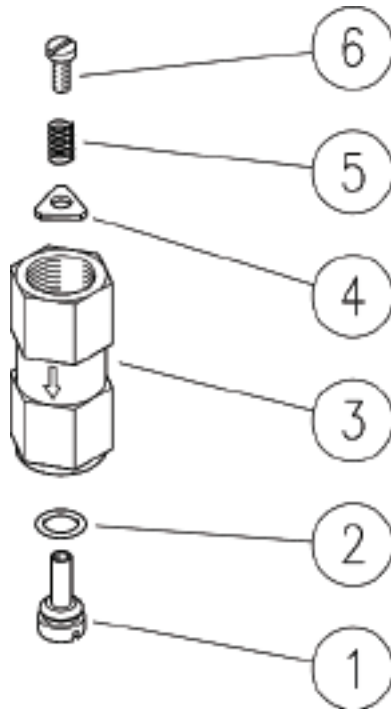
FEATURES

- Light Cracking Pressure
- Brass Body with Stainless Wetted Parts
- O-ring on Poppet for a Leak Proof Seal
- Solid Body Construction, Won't Come Apart During Installation

SPECIFICATIONS

Part Number	YCV14FB	YCV38FB	YCV12FB	YCV34FB
Body Material	Brass			
Maximum Volume	6.5	10.5	21.0	48.0
Maximum Discharge Pressure	2200			
Maximum Fluid Temperature	195°F			
Port Sizes (BSP-FxF)	1/4"	3/8"	1/2"	3/4"
Cracking Pressure	5.8 PSI	5.8 PSI	4.4 PSI	3.0 PSI
Shipping Weight	.5 lb			
Length	1.85"	2.13"	2.60"	3.50"

PARTS LIST



Item	Part Number	Description	Qty
1	Y60203451	Shutter Pin, YCV14FB	1
	Y60202351	Shutter Pin, YCV38FB	
	Y60206251	Shutter Pin, YCV12FB	
	Y60207651	Shutter Pin, YCV34FB	
2	Y10304914	O-ring, YCV14FB	1
	Y10305514	O-ring, YCV38FB	
	Y10317514	O-ring, YCV12FB	
	Y10317914	O-ring, YCV34FB	
3	Y60203131	Body, Brass 1/4", YCV14FB	1
	Y60202431	Body, Brass 3/8", YCV38FB	
	Y60206131	Body, Brass 1/2", YCV12FB	
	Y60207831	Body, Brass 3/4", YCV34FB	
4	Y60203351	Washer, SS 1/4", YCV14FB	1
	Y60202151	Washer, SS 3/8", YCV38FB	
	Y60206351	Washer, SS 1/2", YCV12FB	
	Y60207753	Washer, SS 3/4", YCV34FB	
5	Y60203251	Spring, SS 1/4", YCV14FB	1
	Y60202251	Spring, SS 3/8", YCV38FB	
	Y60206451	Spring, SS 1/2", YCV12FB	
	Y60206451	Spring, SS 3/4", YCV34FB	
6	Y16182500	Screw, SS M3x6, YCV14FB	1
	Y16183100	Screw, SS M4x8, YCV38FB	
	Y16183200	Screw, SS M6x8, YCV12FB	
	Y16183200	Screw, SS M6x8, YCV34FB	



General Pump
is a member of
the Interpump Group

Ref 300445 Rev. G
05-12

