



**A heavy duty, high flow gun**

### SPECIFICATIONS

Part Number:	YG1732	
Maximum Volume	32.0 GPM	
Rated Pressure	1740 PSI	
Maximum Pressure	1950 PSI	
Maximum Temperature	210°	
Port Sizes:	Inlet	1/2" G
	Outlet	1/2" G
Dimensions:	8.5" x 8.6" x 2"	
Weight:	2.75 lbs.	
Material	Stainless Steel, Brass, Plastic, Buna-N, Teflon	

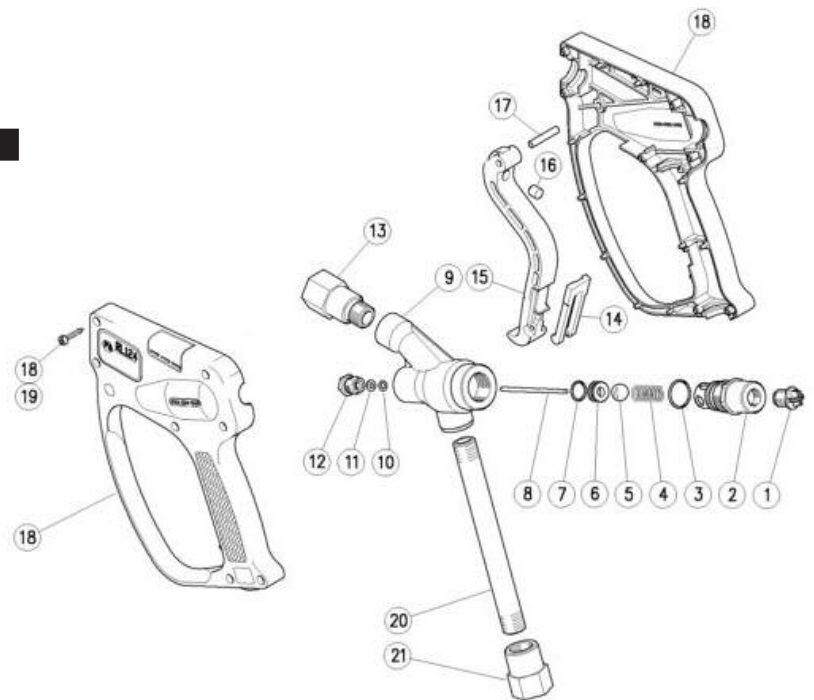
### FEATURES

- Shockproof plastic housings
- Sturdy construction of Stainless Steel and brass
- Ergonomic construction
- Trigger operation minimizes fatigue
- Minimum load loss

### PARTS LIST

No.	Part No.	Description	Kit	Qty.
1.	Y30581584	Plug, 1/4M BSP		1
2.	Y30530931	Spring holder, Brass		1
3.	Y10307201	O-ring, 1.78 x 20.35, Nickel	*	1
4.	Y30530451	Spring, 2 x 29 x 9.9, SST		1
5.	Y14746500	Ball, 1/2", SST	*	1
6.	Y30530851	Seat, SST	*	1
7.	Y10306801	O-ring, 1.78 x 17.17, Nickel	*	1
8.	Y30530751	Piston, 3 x 63, SST	*	1
9.	Y30530535	Housing, Brass		1
10.	Y10316500	O-ring, 2.62 x 2.84	*	1
11.	Y10401800	Back-up ring, 3.2 x 7.5 x 1.2	*	1
12.	Y30411531	Front plug, M10 x 1, Brass		1
13.	Y30530651	Coupling, 1/2 BAP, SST		1
14.	Y30151084	Safety latch		1
15.	Y30530384	Trigger		1
16.	Y30067551	Stop pin, 8 x 7.1, SST		1
17.	Y30251731	Parallel pin, 5 x 27.5, Brass		1
18.	Y30531224	Casing kit		1
19.	Y16307551	Tapping screw, 3.5 x 18, SST		7
20.	Y30510456	Tube, M18 x 1.5, SST		1
21.	Y30510751	Coupler, M18 x 1.5F-1/2F BSP, SST		1

\* Y30531424 Kit, repair (includes parts listed above)



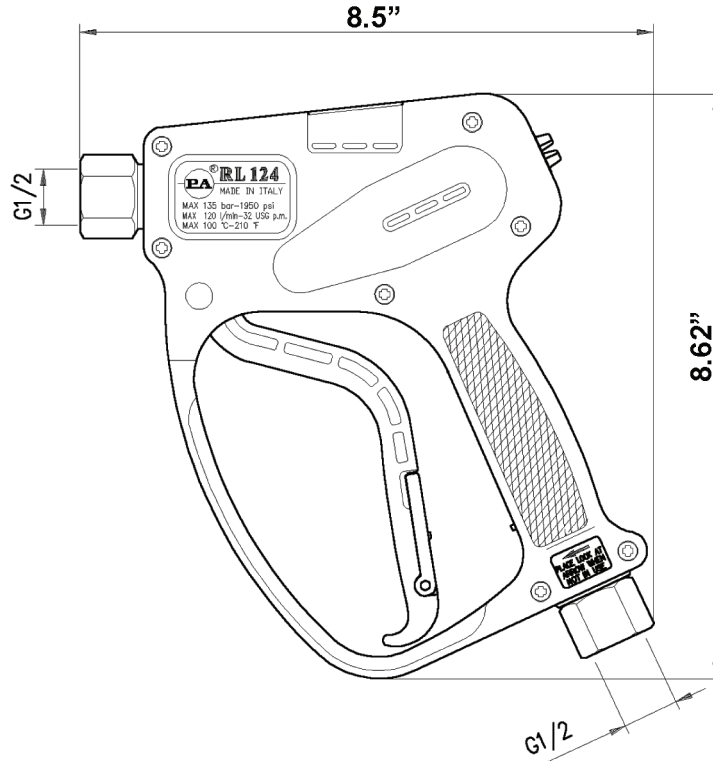
# YG1732

## Spray Gun

**GENERAL PUMP**

A member of the Interpump Group

### DIMENSIONS



### INSTRUCTIONS

This product is to be used with clean, fresh water. For use involving different or corrosive liquids, contact your GP's customer service department. Appropriate filtration should be installed when using unclean liquids. Choose the gun that most closely matches the rated pressure, max flow and max temperature of the pressure wash system. In any case, the pressure of the machine should not exceed the permissible pressure rate imprinted on the gun.

### INSTALLATION

This gun was designed to operate with hot water (in compliance with the technical specs), making sure not to exceed the max temperature. Always fit a safety valve to protect the system when the latter is under pressure. Choose a suitable nozzle and adjust the valve mounted in the front of the gun, thus obtaining a constant supply and avoiding unwanted pressure spikes. If the nozzle wears out, the pressure falls. When you install a new nozzle, adjust the system back to the original pressure.

Ref 300619 Rev.B  
09-07

**GENERAL PUMP** 1174 Northland Drive Mendota Heights, MN 55120  
Phone: (651)686-2199 FAX: (800)535-1745 e-mail: sales@gpcompanies.com www.generalpump.com

