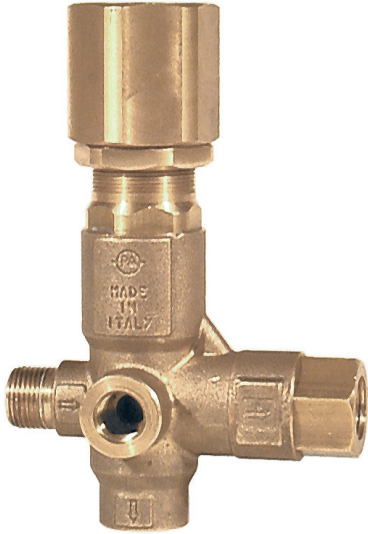


YU5075KMM

Pressure Trapping Unloader



SPECIFICATIONS

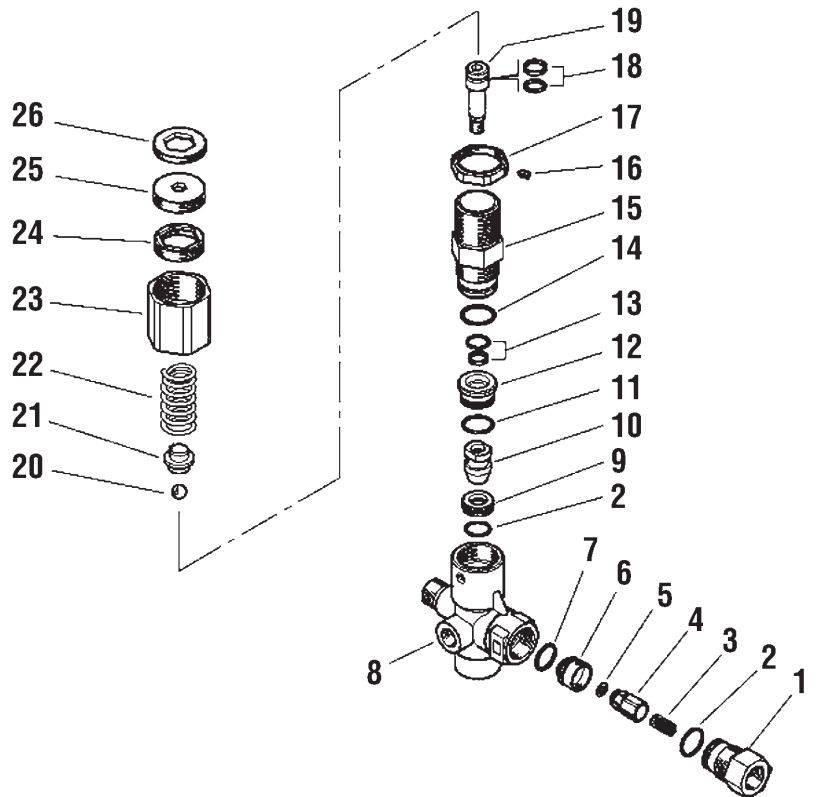
Operating Pressure	5100 psi
Maximum pressure	5650 psi
Maximum Flow	10.5 gpm
Temperature	195°F
Port Sizes: Inlet	3/8" Bsp-M
Discharge	3/8" Bsp-F
Bypass	1/2" Bsp-F
Gauge	1/4" Bsp-F
Dimensions	3.6" x 1.4" x 5.3"
Weight	2.0 lbs.
Materials	Brass, Stainless, Buna-N

FEATURES

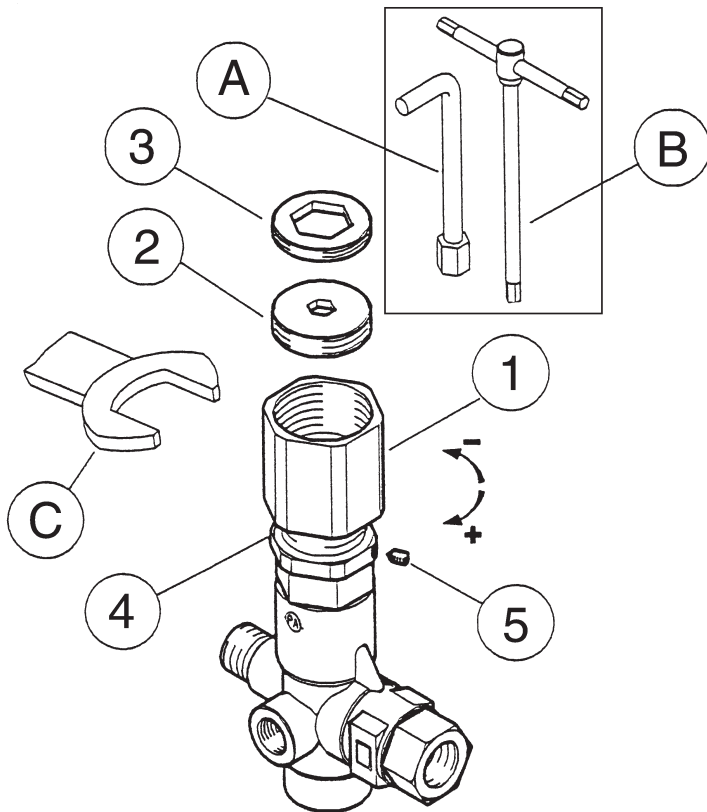
- Premium pressure compensated unloader for low spike pressures
- Adjustable min-max pressure settings
- Stainless steel seat in checkvalve for maximum durability

PARTS LIST

Item	Kit	Part Number	Description	Qty.
Kit	*	Y60181824	Repair kit	1
1.		Y60181131	3/8 Bsp F nipple	1
2.	*	Y10306601	O-ring 1.78 x 15.6 mm	2
3.		Y60005351	Spring	1
4.		Y60005251	S.S. check valve	1
5.	*	Y10321308	O-ring 3 x 6 mm	1
6.		Y60180751	Seat	1
7.	*	Y10306401	O-ring 1.78 x 14 mm	1
8.		Y60180135	Brass body	1
9.	*	Y60180951	Seat	1
10.	*	Y60180851	M 8 shutter	1
11.	*	Y10306801	O-ring 1.78 x 17.17 mm	1
12.		Y60181031	Spacer	1
13.	*	Y60097924	Valve piston seal repair set	1
14.	*	Y10307201	O-ring 1.78 x 20.35 mm	1
15.		Y60180531	Piston housing	1
16.		Y16210000	M 4 x 4 mm dowel	1
17.		Y60181431	M27 lock ring	1
18.	*	Y60097824	Piston seal repair set	1
19.		Y60180651	M 8 piston	1
20.	*	Y14744310	S.S. 11/32" ball	1
21.		Y60181331	Spring guide	1
22.		Y60181261	4.5 x 47 mm spring	1
23.		Y60180431	Cap	1
24.		Y60180331	Lock nut	1
25.		Y60181531	Lower set nut	1
26.		Y60181631	Upper set nut	1



ADJUSTING PROCEDURE



1. Turn knob (ref. 1) counterclockwise to upper limit (spring relaxed)
2. Hold knob 1 with wrench (ref. C, 36 mm) and adjust internal nut (ref. 2) clockwise with wrench (ref. B, 8 mm) to set the MINIMUM PRESSURE required. Move jam nut (ref. 3) close to nut (ref. 2) with wrench (ref. A, 18 mm) and tighten nut (ref. 2) counterclockwise to lock the MINIMUM PRESSURE position.
3. Turn knob (ref. 1) clockwise until the required MAXIMUM PRESSURE is set by moving nut (ref. 4) close to knob (1) and lock it with set screw (ref. 5). Warning: The MAXIMUM PRESSURE must not exceed 5100 psi while making sure that at least 5% of the flow rate is discharged to bypass.

Apply a paint drop on nut (ref. 5) to show loosening or tampering.

DIMENSIONAL DRAWING

