

GENERAL PUMP *A member of the Interpump Group*

ZK3608SS

Stainless Steel Trapped Pressure Unloader

SPECIFICATIONS

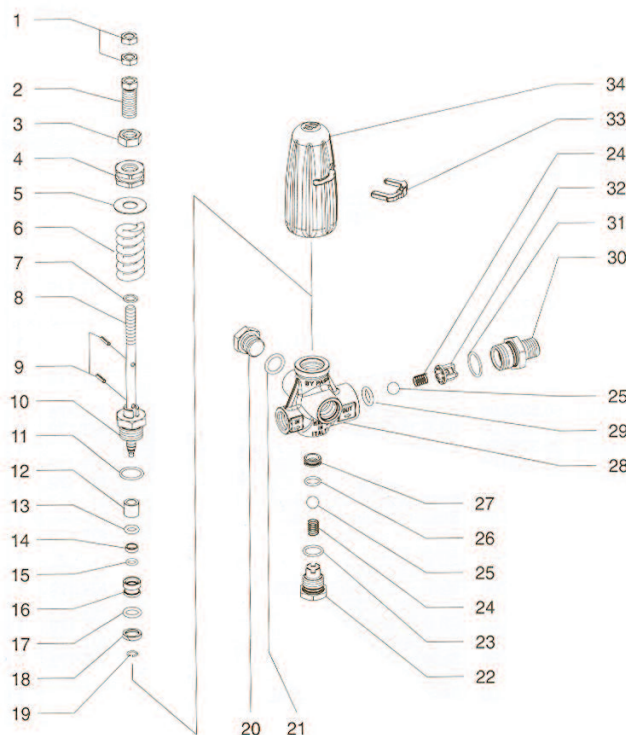
| | | |
|--------------------|--------------------------------|----------------|
| Part Number | ZK3608SS | |
| Maximum Pressure | 3600 PSI | |
| Maximum Flow | 2 - 8 GPM | |
| Temperature | 165 °F | |
| Port Sizes: | Inlet | 3/8" BSP-F (1) |
| | Discharge | 3/8" BSP-M (1) |
| | Bypass | 3/8" BSP-F (2) |
| Dimensions | 7.7" x 3.6" | |
| Shipping Weight | 2.2 lbs | |
| Materials | 316 Stainless Steel, Buna-N | |

FEATURES

- **Control** - Adjustable high and low pressure limits protects equipment from damage.
- **Convenience** - Large handle allows for easy adjustment and is removable without tools for security.
- **Versatility** - 3/8" inlet, discharge, and dual bypass ports fits easily into the widest range of equipment.
- **High Operating Temperature** - to 165° F



PARTS LIST



| Item | Part Number | Description | Kit | Qty |
|------|-------------|--------------------------|---------|-----|
| 1 | 92220000 | Jam nuts | | 2 |
| 2 | 36326264 | Adjustment screw | | 1 |
| 3 | 92240000 | Lock nut | | 1 |
| 4 | 36326164 | Pressure Adjustment ring | | 1 |
| 5 | 96778000 | Glide washer | | 1 |
| 6 | 94750800 | Spring | KIT 187 | 1 |
| 7 | 96703700 | Washer | | 1 |
| 8 | 36331866 | Stem | | 1 |
| 9 | 97665800 | Pin | | 2 |
| 10 | 36331966 | Retainer | | 1 |
| 11 | 90359500 | O-ring | KIT 187 | 1 |
| 12 | 36332772 | Bushing | KIT 187 | 1 |
| 13 | 90381800 | O-ring | KIT 187 | 1 |
| 14 | 36332672 | Spacer | KIT187 | 1 |
| 15 | 90357600 | O-ring | KIT 178 | 1 |
| 16 | 36332166 | Piston control | | 1 |
| 17 | 90382500 | O-ring | KIT 187 | 1 |
| 18 | 36332572 | Anti-extrusion ring | KIT 187 | 1 |
| 19 | 90006300 | Circlip | KIT 187 | 1 |
| 20 | 98210066 | Plug 318"G | | 1 |
| 21 | 90383300 | Washer | KIT 187 | 1 |
| 22 | 36332366 | Plug, Special, M18 x 1.5 | | 1 |
| 23 | 90359200 | O-ring | KIT 187 | 1 |
| 24 | 94735500 | Spring | KIT 187 | 2 |
| 25 | 97483800 | Ball | KIT 187 | 2 |
| 26 | 90358500 | O-ring | KIT 187 | 1 |
| 27 | 36332266 | Valve seat | KIT 187 | 1 |
| 28 | 36332036 | Valve body | | 1 |
| 29 | 90382300 | O-ring | KIT 187 | 1 |
| 30 | 36332466 | Discharge nipple 318"G | | 1 |
| 31 | 36332466 | O-ring | KIT 187 | 1 |
| 32 | 36310451 | Valve guide | KIT 187 | 1 |
| 34 | 36329751 | Clip, handle | | 1 |
| 35 | 36326051 | Handle | | 1 |

APPLICATION

This product is to be used with clean water. For different or corrosive liquids, contact **GP Companies Inc.** technical support department. Appropriate filtration should be installed when used with liquids containing any solids. Select the proper unloader valve based on the nominal operating rating: system rated pressure, max flow and max temperature. **Under no circumstances should the pressure of the system exceed the maximum rated pressure of any component.**

INSTALLATION

When installed on hot water cleaners, this valve is to be installed **before** the boiler. Installing safety devices which limit the accidental increase of the fluid temperature is required.

Always install a safety valve (pop-off) to protect the operator and system.

UNLOADER ADJUSTMENT

READ AND UNDERSTAND THESE INSTRUCTIONS PRIOR TO USE

DO NOT ATTEMPT TO ADJUST THE ZK3608 WITHOUT A PRESSURE GAUGE INSTALLED ON THE SYSTEM!

Choose the correct nozzle size, able to discharge regularly, on bypass, at least 5% of the total flow of the system in order to achieve a constant pressure, and avoid troublesome pressure spikes.

With the pressure washer off:

1. Remove handle (item 35) by removing retaining clip (item 34) and pulling upward. Set aside.
2. Loosen jam nuts (item 1).
3. Turn lock nut (item 3) **counter-clockwise** so that it shoulders against the hex on the adjusting screw (item 2).
4. Turn adjustment ring (item 4) **counter-clockwise** so that it shoulders against the lock nut (item 3).
5. Turn adjustment screw (item 2) **clockwise** until it stops against the retaining ring under the main spring. If steps 1 through 5 were performed correctly the spring should be loose enough to turn by hand.

The unloader is now set to its minimum pressure.

Follow your pressure washer manufacturers guidelines and start up the pressure washer.

With the pressure washer running:

6. Cycle the trigger gun four or five times to release any trapped air and to make sure the unloader is functioning.
7. With the trigger gun open (spraying) turn the pressure adjustment ring (item 4) **clockwise** to increase the pressure. Increase pressure in increments no greater than 200 psi and cycle the trigger gun. If at any point the unloader fails to unload properly shut the unit down and repeat steps 1-6.
8. When you approach the proper pressure cycle the trigger gun four or five times. If pressure holds steady, shut down the unit and set the lock nut (item 3) against the pressure adjustment ring (item 4) and tighten. This locks in the **high pressure** setting. Restart the pressure washer.
9. With the trigger gun open, turn the adjustment screw (item 2) **counter-clockwise** until you reach your desired minimum pressure. Cycle the trigger gun four or five times. If pressure holds steady, shut down the unit and set the jam nuts (item 1) against the adjustment screw (item 2) and tighten. This locks in the **low pressure** setting.
10. Replace the cap (item 35) and clip (item 34)

